

3-Part Mixed

Be Thou My Vision

\$2.25

Christopher Alexander

Be Thou My
Vision

*3-Part Mixed Voices and Piano
with optional Handbells*

cantareworks

THE MUSIC OF CHRISTOPHER ALEXANDER

About the Work

An arrangement of the traditional Irish melody, the lyric continuously grows into a musical confession of one's faith. The piano comfortably supports the voices, and the handbells become an additional voice providing further embellishment to the well-known tune. This arrangement was written in dedication to Sara Mahaffy for her 40 years of service as organist for Ashland United Methodist Church in St. Joseph, Missouri.

Also available as solo. Handbell part score included.

*Be thou my vision, O Lord of my heart;
Naught be all else to me, save that thou art
Thou my best thought by day or by night,
Waking or sleeping, Thy presence my light.*

*Riches I need not, nor vain, empty praise,
Thou mine inheritance, now and always:
Thou and Thou only, first in my heart,
Great God of heaven, my treasure Thou art.*

*Great God of heaven, my victory won,
May I reach heaven's joys, O bright heaven's Son!
Heart of my heart, whatever befall,
Still be my vision, O Ruler of all.*

— Traditional Irish

About the Composer



Mr. Christopher Alexander is an award-winning composer and arranger from St. Joseph, Missouri. He received his Bachelor of Science in Vocal Music Education degree from Missouri Western State University in 2009. A self-taught pianist, his compositions and arrangements ranging from instrumental works to vocal solo and choral literature. Mr. Alexander has been commissioned numerous times by singing groups and church choirs within the northwest Missouri and northeast Kansas regions. He is also active in musical theatre productions as a music director and pianist. His works have been published with GIA Music Publications and Hal Leonard.

In 2016, he was awarded the St. Joseph Allied Arts Council Mayor's Award for Artist of the Year. In 2022, he was inducted into the New Generation Singers Hall of Fame.

Mr. Alexander currently serves as the pianist and primary arranger for The New Generation Singers, a Christian singing youth group based in St. Joseph, Missouri. He is a member of NAFME, ACDA, MCDA, and Phi Mu Alpha Sinfonia Fraternity.

He is available for commissions and conducting events on request.

Dedicated to Sara Mahaffy for her 40 years of service
as organist for Ashland United Methodist Church in St. Joseph, Missouri

BE THOU MY VISION

3-Part Voices and Piano, with optional Handbells (2 octaves)

Arranged by
CHRISTOPHER ALEXANDER

TRADITIONAL IRISH MELODY

2 Octaves
Handbells Used: 15



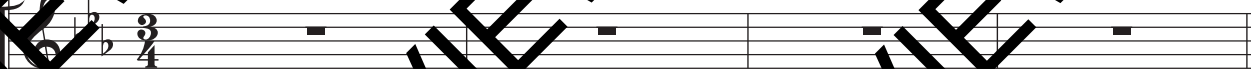
Lento espressivo (♩ = c. 74)

HANDBELLS

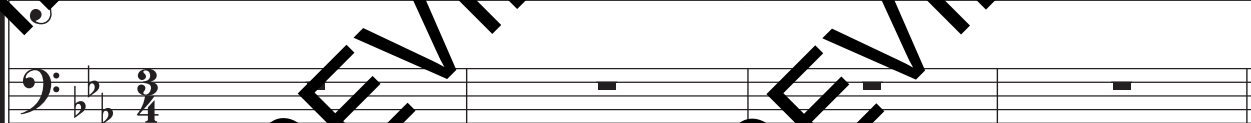


Lento espressivo (♩ = c. 74)

PART I
PART II

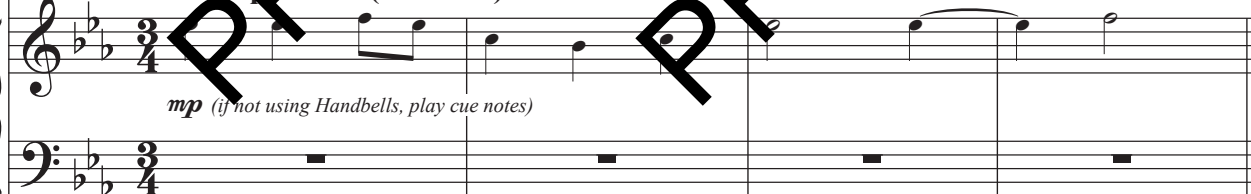


PART III



Lento espressivo (♩ = c. 74)

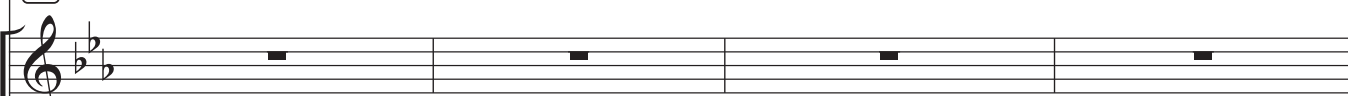
PIANO



5



5



5



Handbell part score on page 12.

Be Thou My Vision

9 *mp* PART II only

Be thou my — vi - sion, O Lord of my heart,

13 *mp* naught be all else to me, save that Thou art.

17 *mp* PART I only

Thou my — best — thought — day or by night

21 ALL PARTS

Wa - king or sleep - ing, Thy — pre - sence my

21

24 *mp*

24 light.

24

28

28

Be Thou My Vision

32

Musical staff for piano accompaniment, measures 32-35. The key signature is B-flat major (two flats). The music consists of chords and moving lines in both the right and left hands.

32

Musical staff for vocal line, measures 32-35. The melody is in the right hand, and the bass line is in the left hand. The lyrics are: Rich - es I ___ heed not, nor vain, emp - ty praise,

Rich - es I ___ heed not, nor vain, emp - ty praise,

32

Musical staff for piano accompaniment, measures 32-35. The key signature is B-flat major (two flats). The music consists of chords and moving lines in both the right and left hands.

Musical staff for piano accompaniment, measures 36-39. The key signature is B-flat major (two flats). The music consists of chords and moving lines in both the right and left hands.

Musical staff for vocal line, measures 36-39. The melody is in the right hand, and the bass line is in the left hand. The lyrics are: Thou mine in - her - i - tance, now and al - ways; ___

Thou mine in - her - i - tance, now and al - ways; ___

Musical staff for piano accompaniment, measures 36-39. The key signature is B-flat major (two flats). The music consists of chords and moving lines in both the right and left hands.